

HEAVY DUTY ROLLATOR WALKER

↑ EZee Life™

CH3021



PRODUCT DESCRIPTION, FEATURES & SPECIFICATIONS



34 Futurity Gate, Unit # 15 Concord Ontario L4K 1S6
wk: 416-739-1267 | Toll Free: 1-888-634-5808 | fx 416-739-7171
email: info@hpurehab.com | www.hpurehab.com

2024/16/12



PRODCT DETAIL





ASSEMBLY INSTRUCTION

Please read the detailed manual before you install the walker.

If you have any questions, please contact our service.

View of all parts



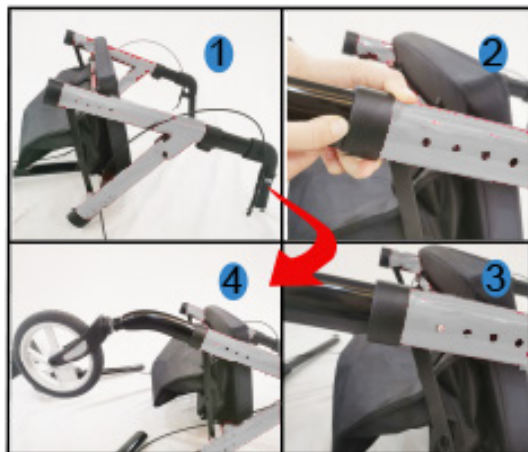
1

Install Handles

- Stand up the main frame
- Push the orange button to release then insert the handle into the frame tube, press the orange button until you hear the "click"

2

- Keep the "A" frame stay open and press the spring button to insert into the main frame.
- Make sure the spring button come out from the hole and hear "click".



3

Install rear wheel sets

- Keep the “A” frame stay open and then overturned the frame.
- Press the spring button and insert the rear wheel tube into the main frame , you will hear “click”if you cooperated well
- Make sure connection cable of rear wheel in the right direction.



4

Handle height adjustable.

- Press the orange button to adjust the height up or down as you wanted.



5

Backrest assembling

Unlock the screw of backrest then you can insert the handle tube into the plastic parts

**6**

Adjusted the seat height

Press the spring buttons of front tubes and rear tubes to adjust the seat height up or down as you wanted.



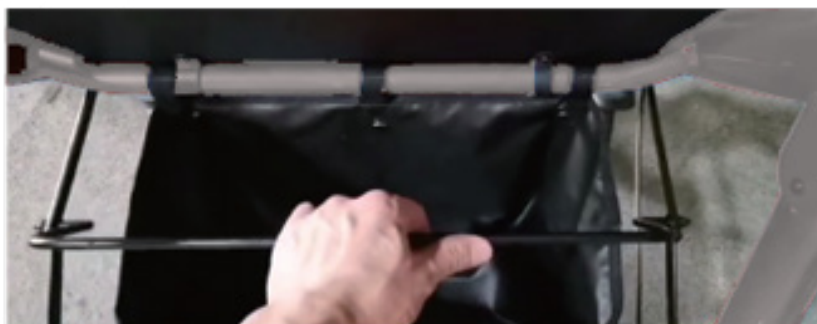
6 Setting the parking brake

- To set the parking brake, locate the spring pins on each hand brake lever.
- Gripping each hand brake to active the back-wheel brakes then push the spring pins down to lock the brakes in place.
- To release the parking brake, grip each hand brake again, causing the spring pins to rease back to their original position



7 Folded the rollator

To pull up the bar under seat to folded the rollator.



SPECIFICATION

Colour:	Black
Overall width:	65cm, 26"
Overall depth:	74cm, 29"
Seat size:	48.5x36.5cm, 19"x14"
Handle height:	88.5-105cm , 35"-41"
Wheels:	10" front, 8"rear wheel
Max user weight:	181kg, 400lbs
Product weight:	8.9kg. 20lbs
Packing dimensions:	62.5x23x46.5cm, 24.5"x9"x18'