

# HEAVY DUTY ROLLATOR WALKER

↑ EZee Life™

CH3019



## PRODUCT DESCRIPTION, FEATURES & SPECIFICATIONS



34 Futurity Gate, Unit # 15 Concord Ontario L4K 1S6

GTA: 416-739-8393 | Toll Free: 1-855-235-2400

email: [Info@factorydirectmedical.com](mailto:Info@factorydirectmedical.com) | [www.factorydirectmedical.com](http://www.factorydirectmedical.com)



## PRODCET DETAIL





## ASSEMBLY INSTRUCTION

Please read the detailed manual before you install the walker.

If you have any questions, please contact our service.

View of all parts



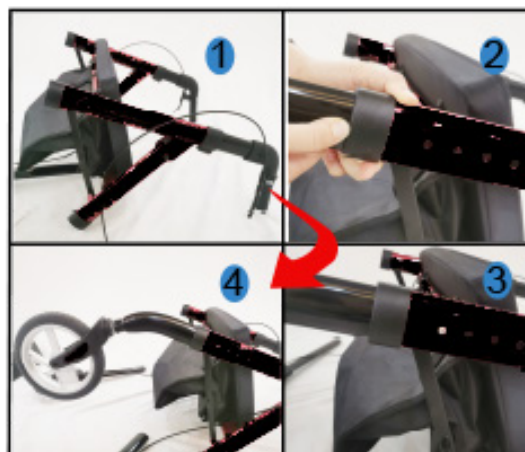
1

### Install Handles

- Stand up the main frame
- Push the orange button to release then insert the handle into the frame tube, press the orange button until you hear the "click"

2

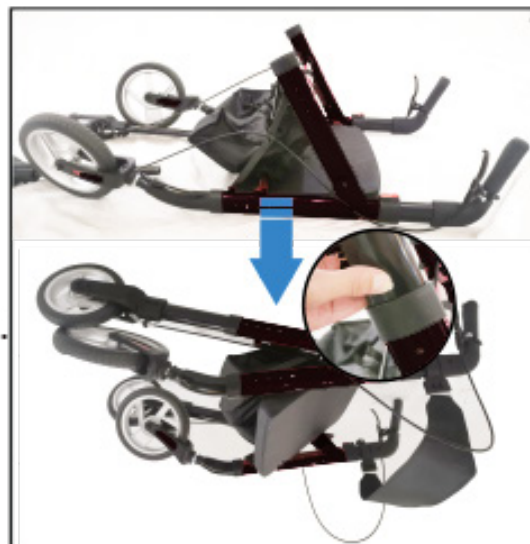
- Keep the "A" frame stay open and press the spring button to insert into the main frame.
- Make sure the spring button come out from the hole and hear "click".



**3**

### Install rear wheel sets

- Keep the “A” frame stay open and then overturned the frame.
- Press the spring button and insert the rear wheel tube into the main frame , you will hear “click”if you cooperated well
- Make sure connection cable of rear wheel in the right direction.



**4**

### Handle height adjustable.

- Press the orange button to adjust the height up or down as you wanted.



5

## Backrest assembling

Unlock the screw of backrest then you can insert the handle tube into the plastic parts



6

## Adjusted the seat height

Press the spring buttons of front tubes and rear tubes to adjust the seat height up or down as you wanted.





## 6 Setting the parking brake

- To set the parking brake, locate the spring pins on each hand brake lever.
- Gripping each hand brake to active the back-wheel brakes then push the spring pins down to lock the brakes in place.
- To release the parking brake, grip each hand brake again, causing the spring pins to rease back to their original position



## 7 Folded the rollator

To pull up the bar under seat to folded the rollator.



## SPECIFICATION

Colour:	Black
Overall width:	65cm, 26"
Overall depth:	74cm, 29"
Seat size:	48.5x36.5cm, 19"x14"
Handle height:	88.5-99cm , 35"-39"
Wheels:	10" front, 8"rear wheel
Max user weight:	181kg, 400lbs
Product weight:	8.9kg. 20lbs
Packing dimensions:	62.5x23x46.5cm, 24.5"x9"x18'

